



Technical Terms

- **Kuruwa -Enclosure**
An enclosed area bounded by earthworks
- **Dorui -Earthwork**
Defensive banks made of earth
- **Koguchi -Enclosure Entrance**
An entrance to an enclosure preventing intruders from entering straight into the castle
- **Umadashi -Entrance Forecourt**
An enclosed area in front of an enclosure bounded by earthworks and moats designed to defend an enclosure entrance from intruders
- **Hori -Moat**
Long ditches around an enclosure

A must-see for wartime mountain castle fans

Takiyama Castle Ruins

Lord : Hojo Ujiteru (third head of the Hojo Clan, third son of Ujiasu)

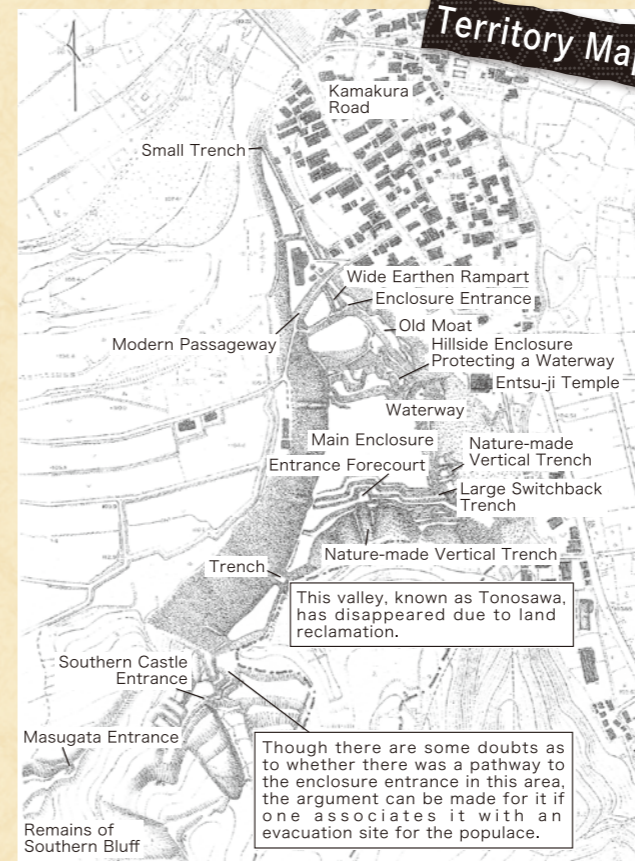
National Historic Site | One of Japan's Next Top 100 Castles

The Takiyama Castle Ruins were designated as a National Historic Site in 1951. As a flatland-mountain castle from the Warring States Period, the remains have been preserved in good condition and they are regarded as historically important.

Takiyama Castle is believed to have been built around 500 years ago. It served as a base from which to press attack into northern Kanto, as well as a defensive position from which to halt the progression of the Takeda Clan armies of Kai Province.

Under the lordship of Hojo Ujiteru, the castle underwent repeated expansions, eventually reaching an east-west width of roughly 900 meters with rivers flanking both the north and south sides. The greatest feature of the castle is the design, which makes clever use of complex land formations of the mountain with piling up and digging out; it's clear to see the castle-building prowess of the Hojo Clan.

Additionally, within Hachioji City there are the ruins of Hachioji Castle, which was built by Hojo Ujiteru to replace Takiyama Castle.



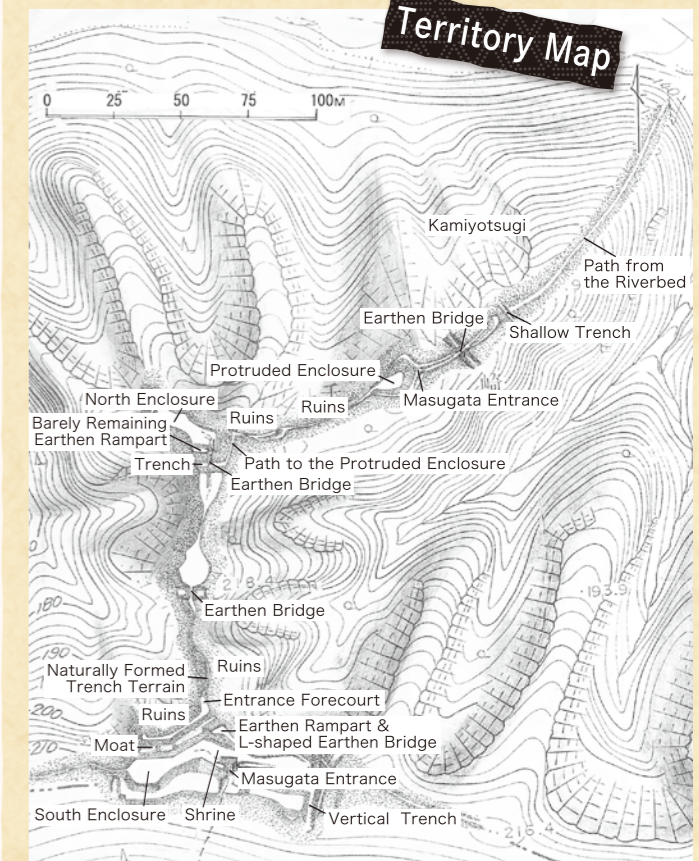
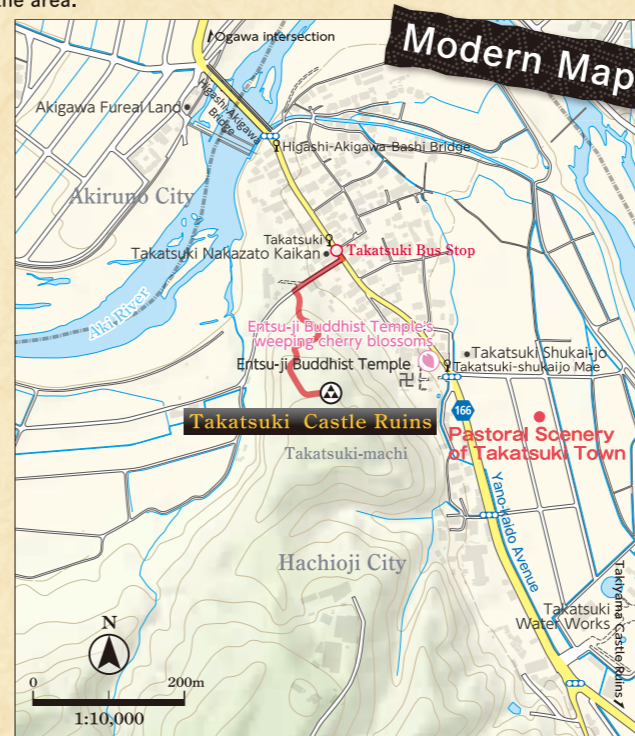
The origin of Takiyama Castle

Takatsuki Castle Ruins

Lord : Oishi Sadashige

The Takatsuki Castle Ruins are situated alongside the meandering Aki and Tama rivers, exhibiting a somewhat protruded shape along the river flow. Takatsuki Castle was built by the one belonged to the Oishi Clan, the acting military general of Musashi Province and later the lord of the castle. It is said that the Oishi Clan later on moved their base to Takiyama Castle after they expanded their sphere of influence. Thus, this castle is believed to be the origin of Takiyama Castle.

* Excepting the pathways, the area inside the Takatsuki Castle Ruins is private property. Please mind your manners when walking through the area.



A fortress made by nature

Negoya Castle Ruins

(Tobuki Castle Ruins) Lord : Unknown

The Negoya Castle Ruins are fraught with mysteries; the area has gone through many physical changes with the passage of time, making it difficult to imagine the state of the castle when it was newly built. Though it was small mountain castle with a straight width of roughly 180 meters, the remnants still visible today suggest that complex land formations were expertly utilized so that even a small number of occupants could effectively defend the inner castle.

* There are several paths within the Negoya Castle Ruins that are both steep and flanked by cliff ridges, with rockfalls progressing further onward. Please refrain from entering such dangerous areas.

AR Takiyama Castle Ruins

This free app lets you walk about the Takiyama Castle Ruins and learn about its history using AR (augmented reality). Use your smartphone or tablet to read the AR markers placed in 10 locations around Takiyama Park, then hold your screen up to the surrounding scenery to see a depiction of how the "famous Warring States Period Takiyama Castle" may have appeared around 450 years ago. You can download the app using the QR code printed below.

*Please be aware that there are some areas within Takiyama Park where cellular signals are weak/unavailable.

*QR Code is a registered trademark of Denso Wave Incorporated.